



GAT MONTHLY MEMBERSHIP PROGRESS REPORT

Results as of: 6/30/2023

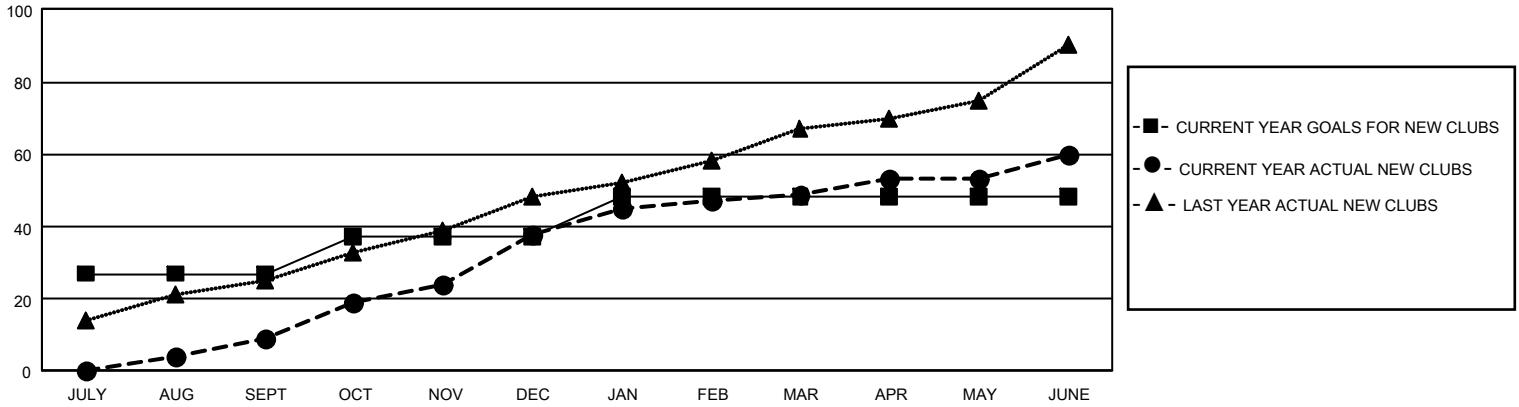
GMT Constitutional Area 6, Group B

REPORT DOES NOT INCLUDE CLUBS IN UNDISTRICTED AREAS.

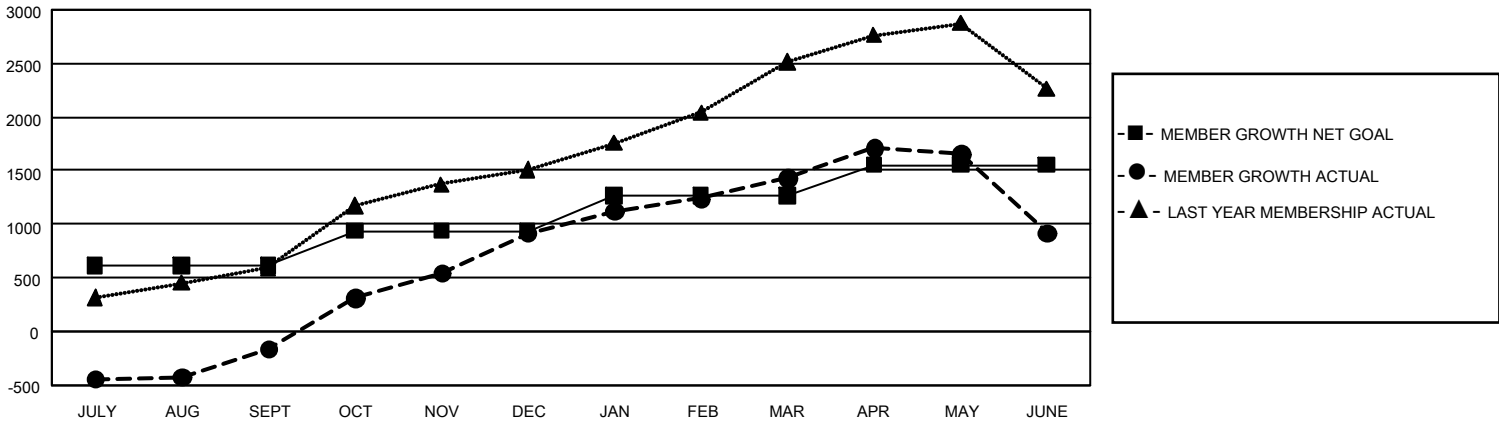
Clubs			
RESULTS FOR 2022-2023			
QUARTER	NEW CLUB GOAL	NEW CLUBS	DROPPED CLUBS
JULY/AUG/SEPT	81	9	28
OCT/NOV/DEC	30	29	3
JAN/FEB/MAR	33	11	0
APR/MAY/JUNE	0	11	2

Members			
RESULTS FOR 2022-2023			
QUARTER	MEMBER GROWTH NET GOAL	MEMBER GROWTH ACTUAL	DROPPED MEMBERS ACTUAL (including transfers)
JULY/AUG/SEPT	610	947	1,019
OCT/NOV/DEC	329	2,156	963
JAN/FEB/MAR	324	787	195
APR/MAY/JUNE	290	865	1,289

GOALS AND ACTUAL NEW CLUBS CUMULATIVE



GOALS AND ACTUAL MEMBERS CUMULATIVE



DROPPED CLUBS: 33	543 CLUBS OF 702 ADDED 1 OR MORE NEW MEMBERS	<u>GENDER DISTRIBUTION</u>	
<u>DROPPED MEMBERS</u>		MALE	13,477 (74.07%)
DECEASED	65	FEMALE	4,716 (25.92%)
CLUB CANCELLED	465	NON BINARY	0 (0.00%)
OTHER	2,940	PREFER NOT TO ANSWER	1 (0.01%)
TOTAL	3,470	TOTAL FAMILY UNIT MEMBERS	7,293
	CLICK HERE FOR CUMULATIVE MEMBERSHIP DATA	FAMILY MEMBERS PAYING HALF DUES	4,220